



**1** Check Parts List

The USB Data\_Cable\_M is not in the delivery list. Please contact your vendor for it.

**2** Check The Appearance

**3** Install SIM Card

**4** Turn On GL300

Power Key

**5** Find "PL2303\_Prolific\_DriverInstaller\_v1417.zip" in develop suit and install the drive for PL2303. If you have already installed it please go to Step 6.

**6** Connect GL300 to computer by USB Data\_Cable\_M.

To mini USB

To computer

**7** Find "Queclink GL300\_Manage\_Tool\_Vx.xx.exe" in develop suit and run it to configure the running parameters of GL300.

COM Settings

COM: COM3

Baudrate: 9600

Password: gl300

Show at startup

OK Cancel

**8** Before the first time using GL300, please full charge the battery

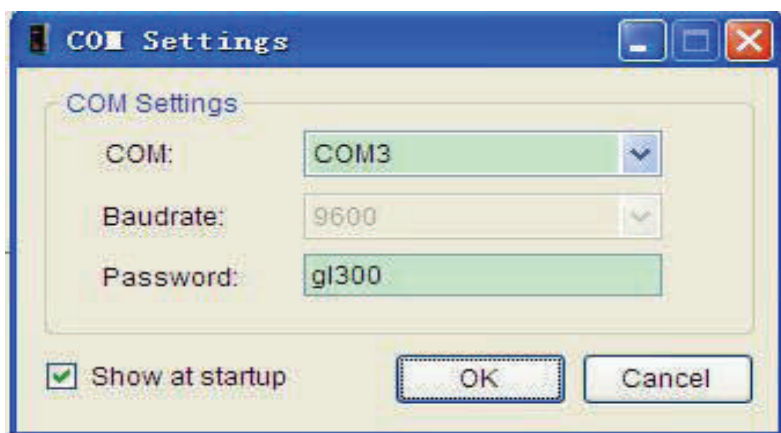
**9** Better place the GL300 under the open sky, and let the surface which has indication Led to the sky.

Here is GPS Antenna

# Page 2 : PC Manage Tool Quick Start

1

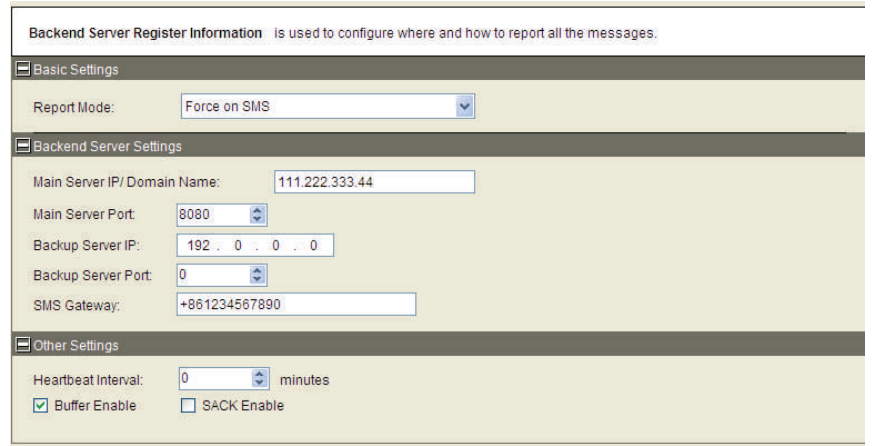
Run manage tool. Select correct com port and input default password "gl300". Then press OK.



2

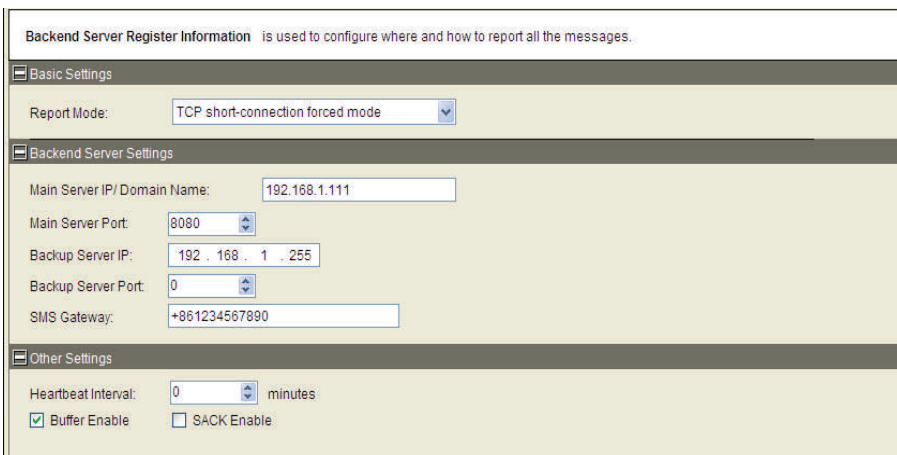
If you want to test the GL300 by SMS then set "Report Mode" to "SMS" and input the phone number which you want to receive the SMS from GL300. After that you can go to Step 6.

Otherwise please go to Step 3



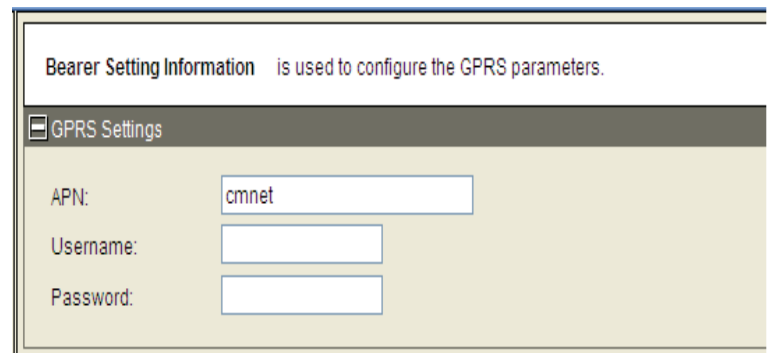
3

Set "Report Mode" to "TCP Short Connection". Input the IP address and port number of the backend server. Please make sure the IP address can be accessed by internet and the data sends to this address can be received.



4

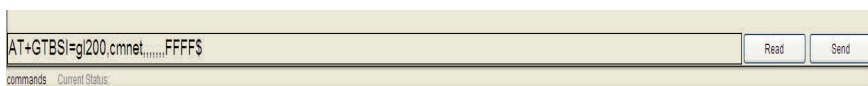
Please contact your SIM card provider and get the APN information for GPRS. Input it in GTBSI setting.



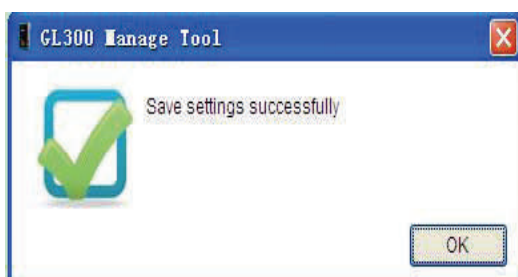
5

Press the "Send" button and update the parameters of GL300. Then the GL300 can report information to your backend server or SMS receiver.

Note: These commands can also be sent to GL300 by SMS.



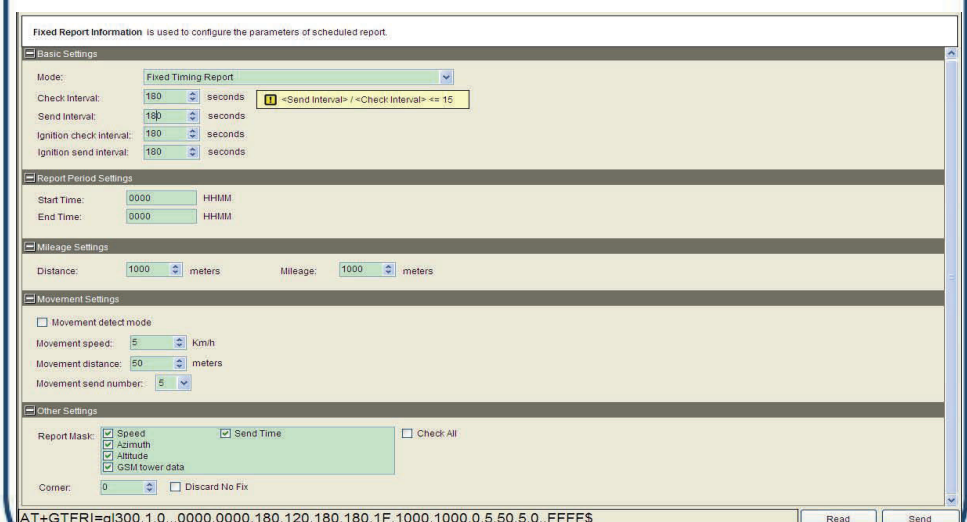
Command has been accepted when you see the success window.



6

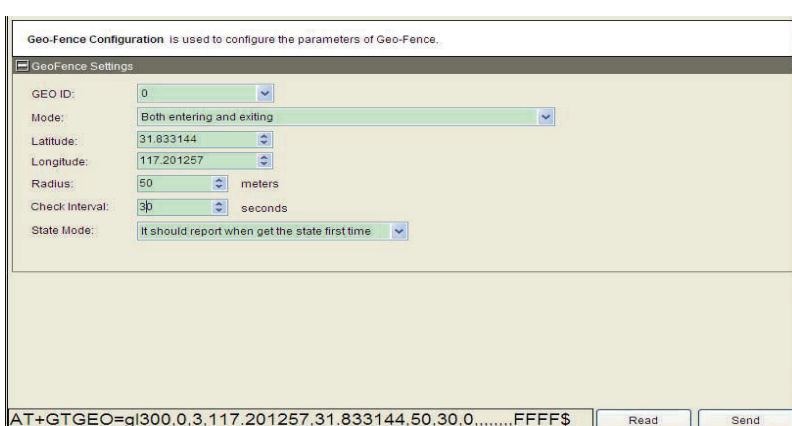
Set the parameters of scheduled fixed timing report so that the GL300 will report it's position to backend server period periodically. Press "Send" button to update the parameters.

Follow screen shot shows how to configure the GL300 to report it's position every 3 minutes.



7

The following screen shot shows how to create a Geo-Fence rule. Press "Send" button to update the parameters.



After these steps. GL300 will have some basic tracking functions like scheduled timing report and Geo-Fence. For other advanced functions of GL300 please refer to "GL300 @Tracker Air Interface Protocol" or visit our website.